

D&S Electric



Company Profile

INDUSTRIAL
TSBC License# 0206586



MAY
2023

Provided By The D&S Electric Team

2081 B North Lakeside Dr
Williams Lake, BC, V2G 5G7

Phone: 250-392-1015 | Fax: 250-392-5139

Kim@dselectric.ca | office@dselectric.ca

www.dselectric.ca

Delivering exceptional customer service with integrity and emphasis on precision, quality and dependability at a reasonable price.

SINCE 1985



Table Of Contents

Information	1
Table Of Contents	2
Message From the Owner	3
Overview	4
Our Projects	6
• Imperial Metals	6
• Conuma Coal	7
• Taseko-Gibraltar Mines	8
• Peace River Coal	8
• Teck Coal Limited	8
• West Fraser Lumber	8
Our Team	9



Message From The Owner



I am pleased to introduce you to our company and the services we provide.

With a well-established portfolio, D&S Electric prides itself on demonstrating excellence when serving industrial, commercial and residential, clients.

In addition to electrical services, we are known for our in-house design, specialty tools/equipment, healthy warehouse inventory, and high level of safety standards.

Our diverse and highly skilled tradesmen serve business owners and contractors throughout the BC Interior with quality workmanship. Our sizeable crew are able to meet project milestones and deliverables on time.

For further information, please visit our website at www.dselectric.ca or call our head office. We would be more than happy to answer any questions and introduce you to our team.

Thank you for your time and we look forward to hearing from you in the future.

Sincerely,

Kimberley Preyzer

Who We Are

D&S Electric has been an established company since 1985. The company received new ownership in 2015 by long time employee, Kimberley Preeper.

Since her take over, Kim has helped the company grow further and become more successful, while maintaining the company's values – exceptional customer service, safety, and integrity.

From our head office in Williams Lake, we offer our services to a variety of communities within the interior and northern regions of BC.

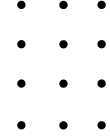


Vision Statement

D&S Electric will be first in its class and British Columbia's, most respected electrical contractor. We are measured by our customer satisfaction and through clear communication and transparency. We will grow our business and be the place where careers are developed, lives are enriched, and successes are celebrated. We will be the conduit between our clients and new technologies delivering energy through our people.



Personal Approach



We treat our customers like people rather than jobs to be completed. We value each customer's unique needs and priorities, taking the time to listen to their needs to ensure we are delivering a service that exceeds their expectations. Working with the customer rather than "for" them: We create design builds, making sure what the customer envisions is what they are going to get. We are flexible in changing our scope of work to accommodate the customer's needs. We do the legwork for the customer, including contacting BC hydro on their behalf, acquiring permits from Technical Safety, and troubleshooting feasibility of electrical services for the customer.

The foundation of our business is supported by our diverse and dedicated team of skilled electricians, project coordinators, planners, and estimators. Our operation excels at all aspects of the electrical contractor's field, from industrial, commercial, residential renovations and new builds to estimating, coordinating, and planning. Our team has experience with industrial capital projects & equipment maintenance, and much more.

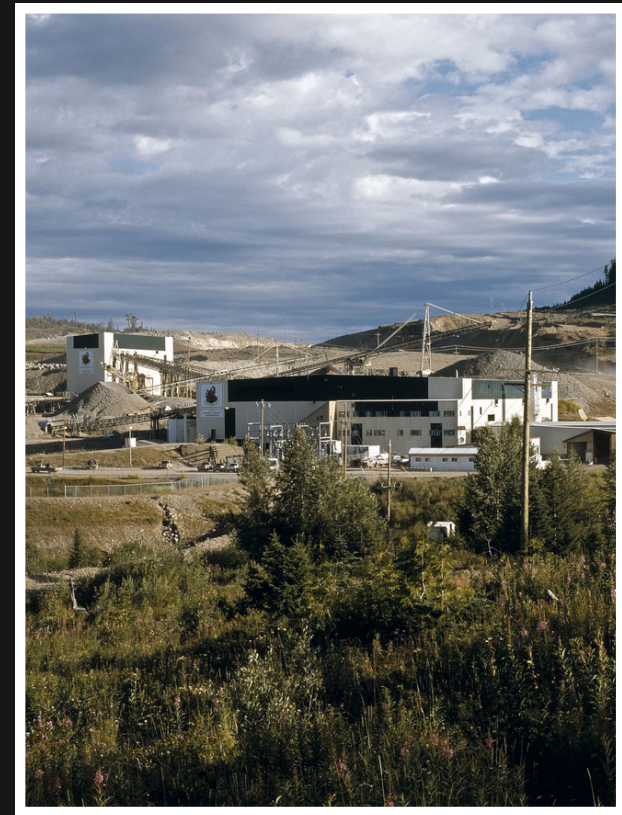
Our shop location carries specialty tools and equipment along with a healthy warehouse inventory with a variety of electrical parts and materials readily in stock.

With our team of skilled employees and fleet of company vehicles and assets, D&S Electric is ready to work with you on any electrical projects that you may have.

Imperial Metals

D&S Electric has skilled employees who are highly experienced within the mining industry. Our crews have provided the following services for Mount Polley Mining Corporation:

- Operations electrical maintenance, pit electricians, and splice shack electricians
- Projects and shutdown planers
- Mill room control, Booster Pumps, Mill PDCs
- Weld barn building
- Lighting supply & installation, incorporating BC Hydro Project rebates and incentives.



Mount Polley Mining Corporation

Conuma Coal

Conuma Coal is a company in the Tumbler Ridge area that owns and operates multiple mine sites. D&S Electric provided both electrical maintenance and capital project installations. Our work included:



- ROM lighting upgrades at Willow Mine
- Installing pipe shack at Brule Mine
- Installation of drills 3D-P Systems
- Installation of GPS on DL
- Plant Maintenance
- Data to Scale Shacks
- Perimeter Grounding and Substations Works



Willow Creek, Wolverine & Brule Mines



Industrial Work

TASEKO | GIBRALTAR MINES LTD

Electrical design build for an employee dry house at the Gibraltar mine.



PEACE RIVER COAL | WATER TREATMENT PLANT

Selenium water treatment plan project

TECK COAL LTD | QUINTETTE COAL

Quintette Coal Operations
Care and Maintenance

WEST FRASER LUMBER | WILLIAMS LAKE SAWMILL

Williams Lake Sawmill Operations

- New Bins & Level Sensors Project
- Radio Repeaters Project
- Lighting Retro-fit Project



Gibraltar Mine, Peace River Coal, Teck Coal, West Fraser Lumber

The People Behind The Name

Because you deserve local, friendly, knowledgeable staff with you every step of the way.

At D&S Electric, we pride ourselves on excellent customer service. Our customers deserve to have a local, friendly and knowledgeable staff ready and willing to assist them in every step of their electrical builds and renovations. From guidance in choosing the right products at the right price, to going over electrical drawings and even 24/7 emergency response, we are here when you need us most.





KIMBERLEY

Owner & Estimator



LUCAS

Projects Manager



NATASHA

CFO & Director



ERIC

Purchaser/Asset Manager



LOGAN

Commercial & Residential



ADAM

Estimator & CADD Design



LASZLO

Projects Manager & FSR



LEONARD

Commercial & Residential



TYLER

Industrial & Commercial



DARRYL

Instrumentation & PLC



LOCHEN

Commercial & Residential



TY

Commercial & Residential



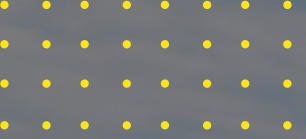
JAN

Industrial & Commercial



OLIVIA

Admin Assistant



D&S Electric



Thank You

