

D&S Electric



Company Profile

Prepared By D&S Electric
TSBC License# 0206586



MAY
2023

Provided By The D&S Electric Team

2081 B North Lakeside Dr
Williams Lake, BC, V2G 5G7

Phone: 250-392-1015 | Fax: 250-392-5139

Kim@dselectric.ca | office@dselectric.ca

www.dselectric.ca

Delivering exceptional customer service with integrity and emphasis on precision, quality and dependability at a reasonable price.

SINCE 1985



Table Of Contents

Information	1
Table Of Contents	2
Message From the Owner	3
Overview	4
Our Projects	6
• Imperial Metals	6
• Conuma Coal	7
• Taseko-Gilbraltar Mines	8
• Peace River Coal	8
• Teck Coal Limited	8
• West Fraser Lumber	8
Commercial Work	9
Residential Work	12
Specialties	14
Our Team	15



Message From The Owner



I am pleased to introduce you to our company and the services we provide.

With a well-established portfolio, D&S Electric prides itself on demonstrating excellence when serving industrial, commercial and residential, clients.

In addition to electrical services, we are known for our in-house design, specialty tools/equipment, healthy warehouse inventory, and high level of safety standards.

Our diverse and highly skilled tradesmen serve business owners and contractors throughout the BC Interior with quality workmanship. Our sizeable crew are able to meet project milestones and deliverables on time.

For further information, please visit our website at www.dselectric.ca or call our head office. We would be more than happy to answer any questions and introduce you to our team.

Thank you for your time and we look forward to hearing from you in the future.

Sincerely,

Kimberley Preyzer

Who We Are

D&S Electric has been an established company since 1985. The company received new ownership in 2015 by long time employee, Kimberley Preeper.

Since her take over, Kim has helped the company grow further and become more successful, while maintaining the company's values – exceptional customer service, safety, and integrity.

From our head office in Williams Lake, we offer our services to a variety of communities within the interior and northern regions of BC.

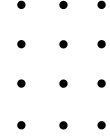


Vision Statement

D&S Electric will be first in its class and British Columbia's, most respected electrical contractor. We are measured by our customer satisfaction and through clear communication and transparency. We will grow our business and be the place where careers are developed, lives are enriched, and successes are celebrated. We will be the conduit between our clients and new technologies delivering energy through our people.



Personal Approach



We treat our customers like people rather than jobs to be completed. We value each customer's unique needs and priorities, taking the time to listen to their needs to ensure we are delivering a service that exceeds their expectations. Working with the customer rather than "for" them: We create design builds, making sure what the customer envisions is what they are going to get. We are flexible in changing our scope of work to accommodate the customer's needs. We do the legwork for the customer, including contacting BC hydro on their behalf, acquiring permits from Technical Safety, and troubleshooting feasibility of electrical services for the customer.

The foundation of our business is supported by our diverse and dedicated team of skilled electricians, project coordinators, planners, and estimators. Our operation excels at all aspects of the electrical contractor's field, from industrial, commercial, residential renovations and new builds to estimating, coordinating, and planning. Our team has experience with industrial capital projects & equipment maintenance, and much more.

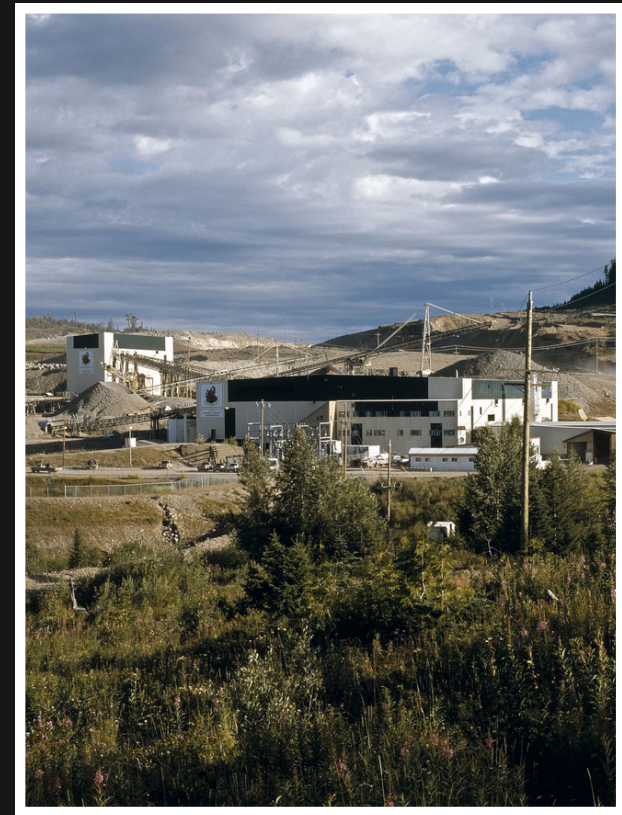
Our shop location carries specialty tools and equipment along with a healthy warehouse inventory with a variety of electrical parts and materials readily in stock.

With our team of skilled employees and fleet of company vehicles and assets, D&S Electric is ready to work with you on any electrical projects that you may have.

Imperial Metals

D&S Electric has skilled employees who are highly experienced within the mining industry. Our crews have provided the following services for Mount Polley Mining Corporation:

- Operations electrical maintenance, pit electricians, and splice shack electricians
- Projects and shutdown planers
- Mill room control, Booster Pumps, Mill PDCs
- Weld barn building
- Lighting supply & installation, incorporating BC Hydro Project rebates and incentives.



Mount Polley Mining Corporation

Conuma Coal

Conuma Coal is a company in the Tumbler Ridge area that owns and operates multiple mine sites. D&S Electric provided both electrical maintenance and capital project installations.

Our work included:

- ROM lighting upgrades at Willow Mine
- Installing pipe shack at Brule Mine
- Installation of drills 3D-P Systems
- Installation of GPS on DL
- Plant Maintenance
- Data to Scale Shacks
- Perimeter Grounding and Substations Works



Willow Creek, Wolverine & Brule Mines



Industrial Work

TASEKO | GIBRALTAR MINES LTD

Electrical design build for an employee dry house at the Gibraltar mine.



PEACE RIVER COAL | WATER TREATMENT PLANT

Selenium water treatment plan project

TECK COAL LTD | QUINTETTE COAL

Quintette Coal Operations
Care and Maintenance

WEST FRASER LUMBER | WILLIAMS LAKE SAWMILL

Williams Lake Sawmill Operations

- New Bins & Level Sensors Project
- Radio Repeaters Project
- Lighting Retro-fit Project



Gibraltar Mine, Peace River Coal, Teck Coal, West Fraser Lumber

District of Chetwynd

D&S Electric was proud to provide pathway lighting in various locations for the District of Chetwynd over the past several years. Our work included the following:

4500 Block N Access Road (2022): Installation of unmetered service pole for pathway lighting.

4876 Block N Access Road (2019): Installation of 24 pathway LED lights along Hwy 97 North Access Road.

4816 Block N Access Road (2019): Installed 24 LED lamps and poles

Corner 48 Street North Access Road (2019): Installation of 10-pole pathway lighting

Pathway Lighting (2017): Installed 24 pathway bollards



Chetwynd Pathway Lighting

Commercial Works

United Concrete

After a devastating fire loss, United Concrete was a new rebuild project that utilized our in-house design team and construction crews that quickly saw the local plant owner back in full operations.



Tsilhqot'in national Government

A tenant improvement project that saw a conversion of an old school building into office and learning center for the Tsilhqot'in National Government

No Problems, Only Solutions



Ming's Palace

In 2022, D&S Electric was awarded the electrical design build and construction on Ming's Palace, a Chinese food restaurant in Williams Lake, BC.

Commercial Work

?Esdilagh First Nation

In 2018, D&S Electric worked on the ?Esdilagh First Nation's outdoor hockey rink. D&S Electric supplied and installed a new 100amp pole service complete with exterior lighting and controls. We also completed underground feeds to new lamp standards with area flood lights. This project was a great opportunity to build meaningful infrastructure for a First Nation community.



Your Conduit To Power



Reno Rescue

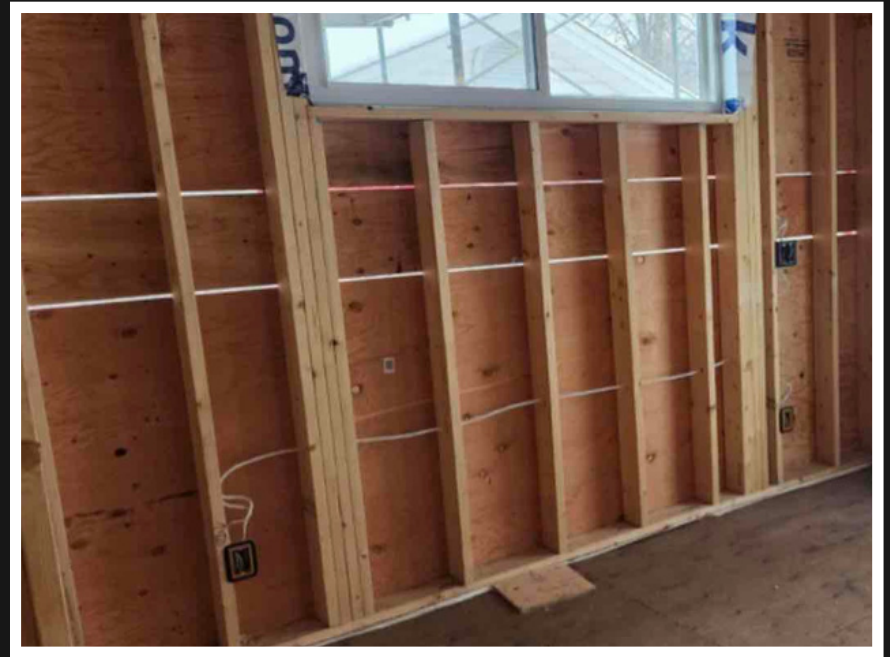
Our Reno rescue services provide you with a peace of mind ensuring that the electrical portion of your renovation is completed safely meeting all of the Canadian Electrical Code Requirements. Our estimating services and site-visits ensure that the project is completed on time and on budget. Quite often we can provide a room by room breakdown and itemized list including the scope of work. At the end of every project the homeowner is provided with a copy of the electrical permit and statutory declaration for both resell and insurance purposes.

We fix all the re-volt-ing work out there

New Construction

D&S Electric provides years of experience to new constructions builds for residential, commercial and residential care facilities. From the ground up, our services can include overhead or underground primary services, branch circuit wiring, lighting and control, fire alarm, life safety systems, data, communications and security. Our skilled support staffs provide excellent project close-out submittals as well, including product specifications; AutoCAD formatted as builds and operation and maintenance manuals.

**Our electricians have
"amp-le" experience**



Retail Store Front

D&S Electric has a wide range of electrical supplies and brands for those home projects you are tackling yourself. Stop in and see what D&S has to offer. You might be surprised that a local business has competitive pricing compared to your local hardware store. D&S Electric is also staffed with knowledgeable certified electricians who can help you pick out the right items for your project and offer friendly advice.

Our Services

- Industrial plant care and maintenance
- Mining, forestry, oil and gas services
- Site upgrades
- Estimating and custom design builds
- Fire alarm installations
- Energy-efficient lighting retrofits and upgrades
- Vacant land new pole services
- Solar panel additions and power units
- New commercial construction
- Tenant improvements
- Residential care facilities
- Homeowners' Reno rescues and inspections



The People Behind The Name

Because you deserve local, friendly, knowledgeable staff with you every step of the way.

At D&S Electric, we pride ourselves on excellent customer service. Our customers deserve to have a local, friendly and knowledgeable staff ready and willing to assist them in every step of their electrical builds and renovations. From guidance in choosing the right products at the right price, to going over electrical drawings and even 24/7 emergency response, we are here when you need us most.





KIMBERLEY

Owner & Estimator



LUCAS

Projects Manager



NATASHA

CFO & Director



ERIC

Purchaser/Asset Manager



LOGAN

Commercial & Residential



ADAM

Estimator & CADD Design



LASZLO

Projects Manager & FSR



LEONARD

Commercial & Residential



TYLER

Industrial & Commercial



DARRYL

Instrumentation & PLC



LOCHEN

Commercial & Residential



TY

Commercial & Residential



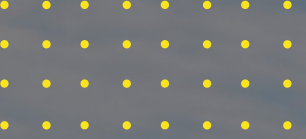
JAN

Industrial & Commercial



OLIVIA

Admin Assistant



D&S Electric



Thank You

